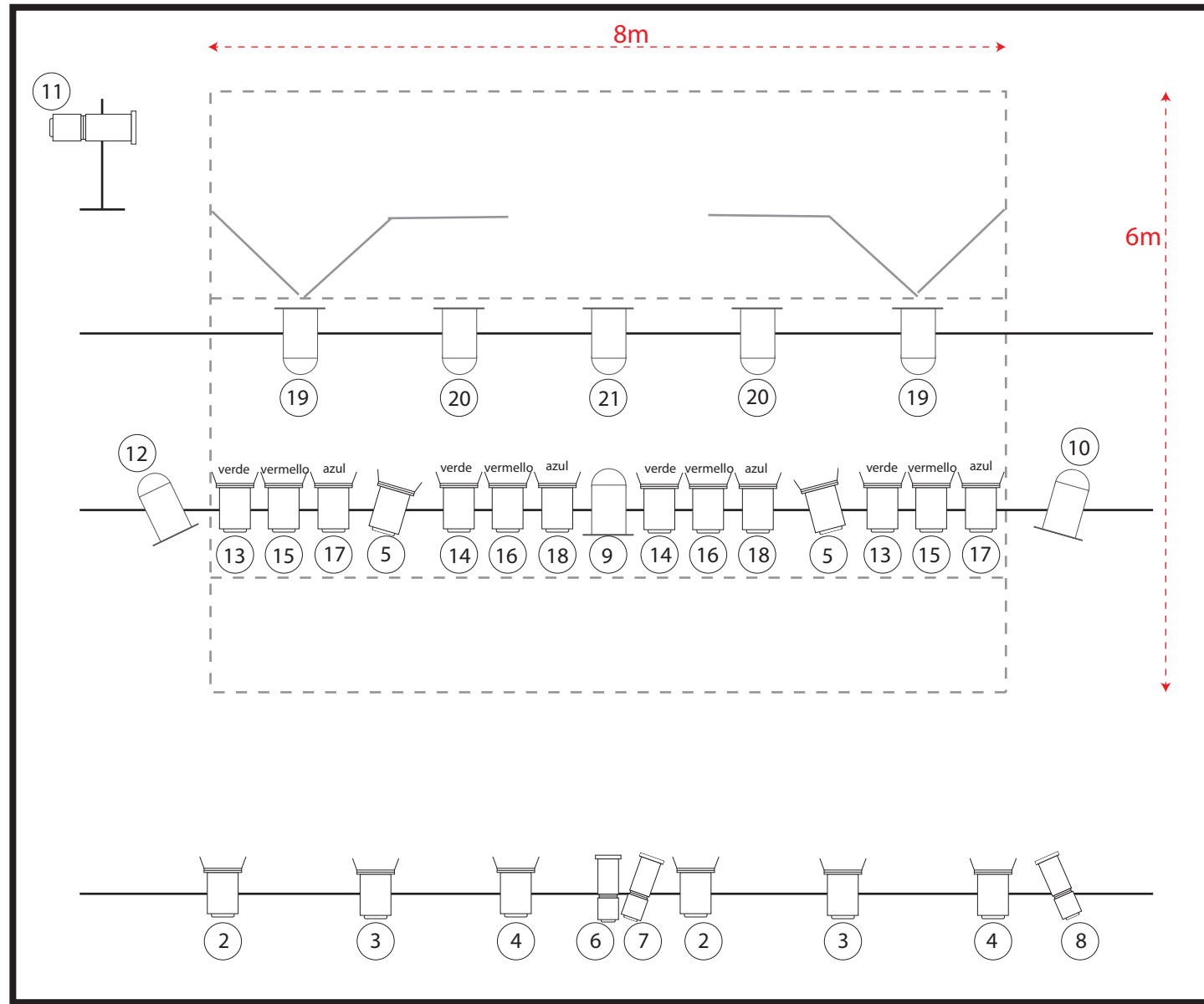
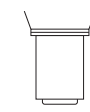
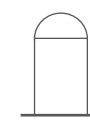
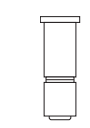


PELOS NA LINGUA Talía teatro



 20 PC 1000w

 8 PAR 64 1000w
(5 lámpara nº1, 3 lámp nº5)

 4 recortes 575w 25/50°

- 1 burra nun lateral de escena.
- SON: Equipo de son con CD dobre.
- Tempo de montaxe: 4h
- Tempo de desmontaxe: 1h

Dani Trillo
telf 625 55 03 86